


STATE OF NORTH CAROLINA
DEPARTMENT OF TRANSPORTATION

PAT MCCRORY
GOVERNOR

ANTHONY J. TATA
SECRETARY

May 18, 2015

Memorandum To: Potential Bidders and Meeting Attendees
From: Michael Kneis, P.E., Division Project Manager
Subject: ADDENDUM 1/Pre-Bid Meeting Minutes Annual Needs for Plant Bed Maintenance on Toll Facility

DocuSigned by:

5CDD3BA8BDE94C1...

A mandatory pre-bid meeting was held at the Roadside Environmental Engineer's Office at 10:00 am on Monday, May 18, 2015. The sign in sheet is attached showing people in attendance.

Jason Holmes opened the meeting with introductions and a review of the proposal. Special attention was drawn to the following items:

On Page 25 the payment unit of "Each" for *Routine Plant Bed Maintenance and Mowing* covers the maintenance work required per the proposal for ALL plant beds, per the plans, for a one (1) month cycle. On Page 25 the payment unit of "Each" for *Pre-Emergent Herbicide Treatment* covers the work required per the proposal for ALL plant beds, per the plans, for a one time cycle.

On Page 27, please change the third sentence of (7.) to read: *All designated mulching shall be accomplished between December 1 and February 28 and/or between June 1 and July 31.* This will give another window for the Contractor to perform the mulching work but will not affect the quantity. In addition, please add the following language to page 7:

**INTERMEDIATE CONTRACT TIME NUMBER (5) AND
LIQUIDATED DAMAGES**

(2-20-07)

SP1 G14 H

The Engineer will direct the Contractor which beds will receive mulch. The Contractor shall complete the work required for placement of mulch in the areas as shown on the site maps and descriptions, as directed by the Engineer.

The date of availability for this intermediate contract time is June 1 of the contract year.

The completion date for this intermediate contract time is July 31 of the contract year.

The liquidated damages are **One Hundred Dollars (\$ 100.00)** per calendar day.

On Page 27 Equipment and Crew Requirement NCDOT advised the Contractor that no backwards operation of equipment will be allowed within the gantry areas. There are inductive loops within the area that send notifications to the Traffic Management Center because of built-in safety features.

On Page 29 the Work Zone Signing and Requirements were discussed. These guidelines are in the proposal for stationary work zones. Traffic control information has been attached for mowing operations. Small mowers will require one amber warning light. No "Caution Mower" sign is required for small zero turn style mowers.

On Page 30 Toll Traffic Coordination has been changed to require notification at least 24 hours in advance of ANY CONTRACT WORK ACTIVITIES. Notification by telephone will not be allowed. **The Contractor shall notify the Traffic Management Center by email at ncta_tmc@ncdot.gov in advance of any plant bed maintenance work for this project.** This notification allows the public to be notified via message boards and is for the safety of the Contractor and the travelling public.

The pesticide application license, as discussed on Page 26 (6.), shall be submitted with the bid package.

The TOTAL estimated bed quantity for this project is 12 acres, as noted on the plans.

NCDOT intends for the Contractor to perform one full pruning per year with touch up on areas as part of the monthly maintenance work, as directed by the Engineer. As a result of this discussion NCDOT has decided to add a pay item to the project. *Routine Plant Bed Maintenance, Mowing and Heavy Pruning* will be measured and paid in units of each. This work includes, but is not limited to, all the maintenance work for the beds shown on the site maps (plans provided) and as discussed in the scope. This cycle will be performed one month in lieu of the *Routine Plant Bed Maintenance and Mowing* cycle. If it is determined that the plant beds need more than one full pruning per year, the quantity for *Routine Plant Bed Maintenance, Mowing and Heavy Pruning* will be overrun and the quantity for *Routine Plant Bed Maintenance and Mowing* will underrun. A new bid form is being provided with the additional bid item included.

There are no federal funds being used on this project and all funding is state funded.

Rules regarding subcontracting are per Article 108-6 of the *Standard Specifications*.

NCDOT will allow staging for mulching operations at their salt facility at Green Level West Road.

For any questions prior to bid opening, contact Jennifer Evans at (919)220-4600. Any responses to questions will be emailed to all prospective bidders.

**North Carolina Department of Transportation
PURCHASE ORDER CONTRACT BID FORM**

Work Order: 40.1.2

Description: PLANT BED MAINTENANCE ON TOLL FACILITY

County: WAKE AND DURHAM

ITEM	SECT	DESCRIPTION	QTY	UNIT	UNIT PRICE (\$)	AMOUNT BID (\$)
1	SP	ROUTINE PLANT BED MAINTENANCE AND MOWING	7	EA		
2	SP	ROUTINE PLANT BED MAINTENANCE, MOWING AND HEAVY PRUNING	1	EA		
3	SP	PRE-EMERGENT HERBICIDE TREATMENT	1	EA		
4	SP	SHREDDED HARDWOOD BARK MULCH	4,800	CY		

TOTAL BID FOR PROJECT: _____

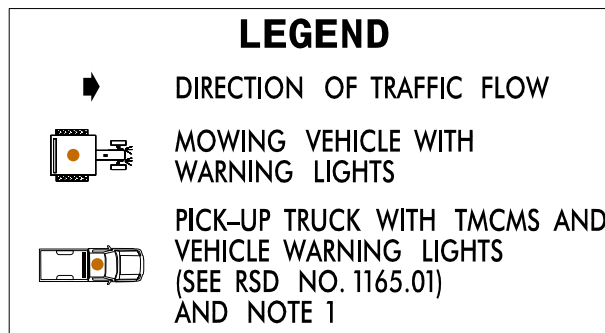
Sign Up Sheet for Prebid Meeting Project Toll Plant Bed Date 5/18/2015

Name	Representing	Email Address
Jennifer Evans	NCDOT	jennifer-evans@ncdot.gov
Bradley Young		jbyoung1@ncdot.gov
Jason Holmes	NCDOT	jholmes@ncdot.gov
Corey Sudderth	NCDOT	csudderth@ncdot.gov
JOHN STANSBERRY	NCDOT (NCTA)	jdstansberry@ncdot.gov
Jason Atkins	A.L.M. Contracting	jason@almcontracting.net
PHIL MARSH	GREEN REVIVAL LANDSCAPING	GREENREVIVAL@LIVE.COM
Russell B. Lichtenstein	SOUTHERN GARDEN, INC.	RUSSELL@SOUTHERNGARDENINC.COM
Ford Perry	TWIN OAKS NURSERY INC	TWINOAKS@CENTURYLINK.NET
Jeff Johnson	Power Mulch Inc.	JGJ81M@GMAIL.COM

Notes for Mowing Operations on Multilane Divided Facilities (Any Speed)

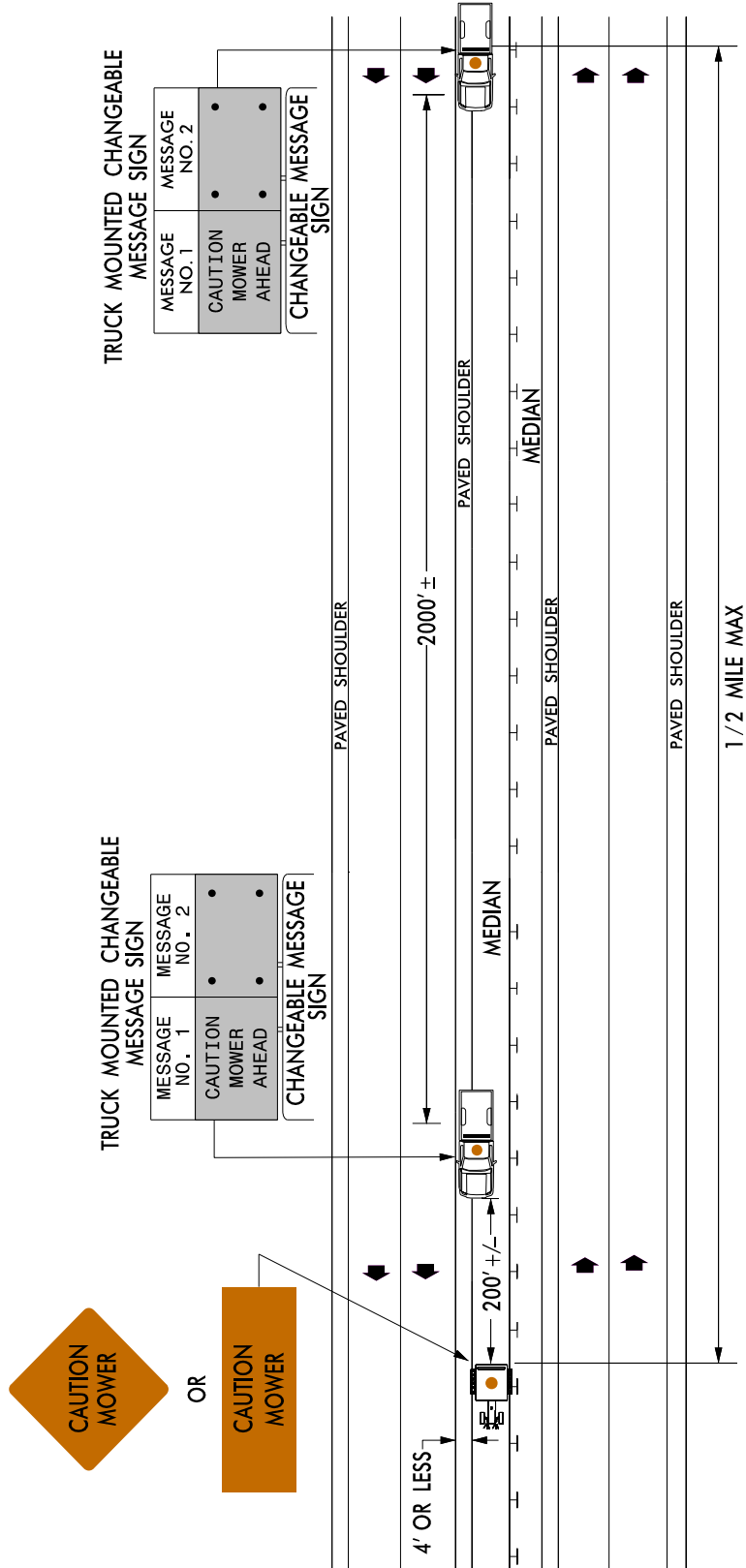
- (1) Use warning lights with at least 50% being amber in color attached to vehicles as high as possible and in a manner such that they are not obscured by equipment or supplies. Vehicle hazard signals or lights may only be used to supplement this requirement.
- (2) The total distance between the first advance warning TMCMS and moving vehicle should not exceed ½ mile.
- (3) Use a warning light on top of cab and two outside blinking amber lights visible from both directions on all mowers.
- (4) Use “Caution Mower” sign on rear of each mower.
- (5) Mowing operations are restricted to daylight hours.
- (6) Truck mounted changeable message sign

Min. Size	Min. Letter Height
73" x 43"	18"



Mowing Operation

Multilane Divided Facilities
Location: Median With Tire of Mowing Vehicle
Four Feet or Less From Edgeline
Volume: Any Volume
Speed: Any Speed



Notes for Mowing Operations on Multilane Divided Facilities (60 MPH & Above)

- (1) Use warning lights with at least 50% being amber in color attached to vehicles as high as possible and in a manner such that they are not obscured by equipment or supplies. Vehicle hazard signals or lights may only be used to supplement this requirement.
- (2) The total distance between the first advance warning TMCMS and moving vehicle should not exceed ½ mile.
- (3) Use a warning light on top of cab and two outside blinking amber lights visible from both directions on all mowers.
- (4) Use “Caution Mower” sign on rear of each mower.
- (5) Mowing operations are restricted to daylight hours.


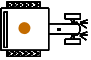
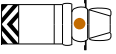


(6) Flashing arrow board

Board Type	Min. Size
C	96" x 48"

(7) Truck mounted changeable message sign

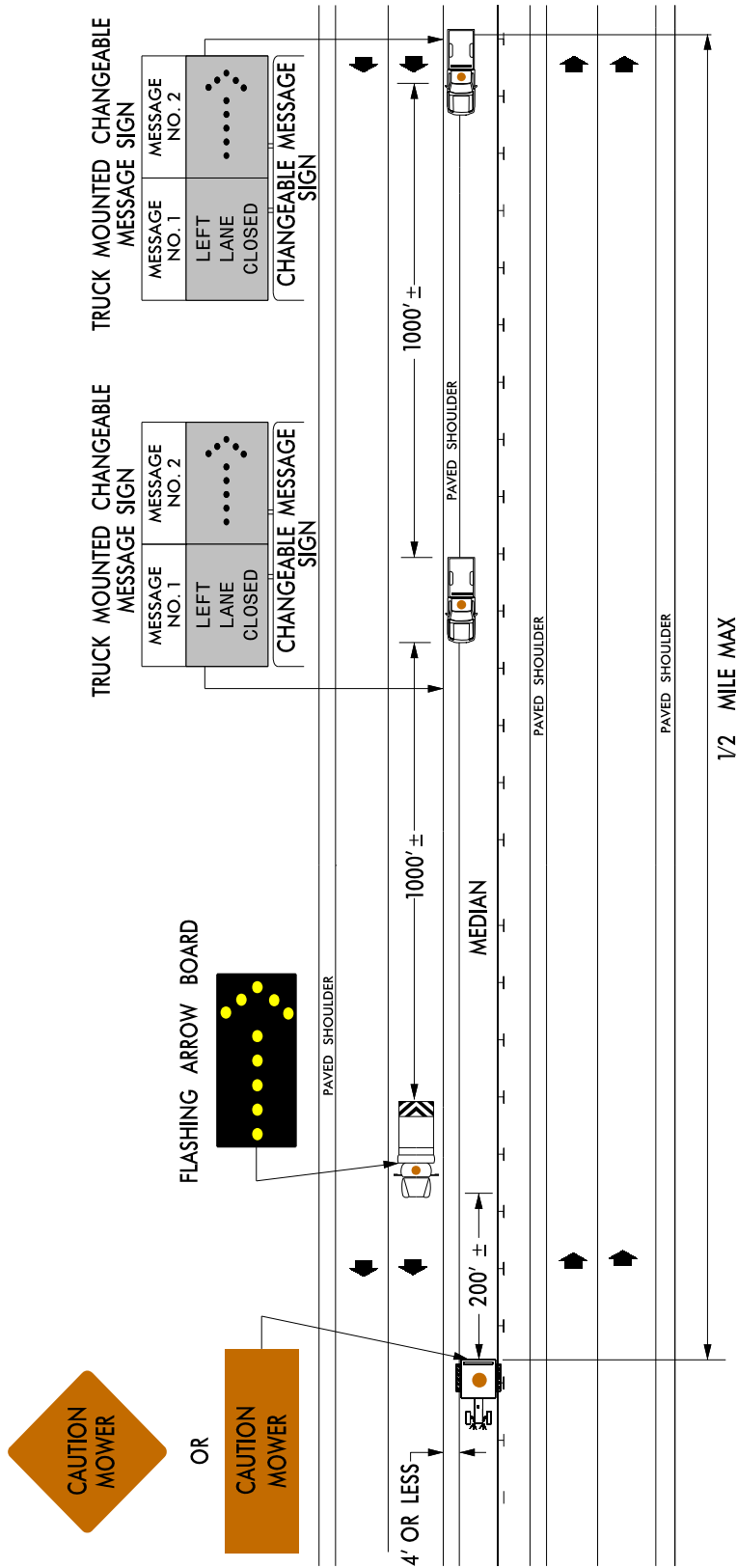
Min. Size	Min. Letter Height
73" x 43"	18"

LEGEND

	DIRECTION OF TRAFFIC FLOW
	MOWING VEHICLE WITH WARNING LIGHTS
	PROTECTION VEHICLE WITH TRUCK MOUNTED ATTENUATOR (TMA) AND VEHICLE WARNING LIGHTS (SEE RSD NO. 1165.01) AND NOTE 1
	FLASHING ARROW BOARD APPROPRIATE DIRECTION INDICATED
	PICK-UP TRUCK WITH TMCMS AND VEHICLE WARNING LIGHTS (SEE RSD NO. 1165.01) AND NOTE 1

Mowing Operation

Multilane Divided Facilities
Location: Median With Tire of Mowing Vehicle
Four Feet or Less From Edgeline
Volume: Any Volume
Speed: 60 MPH & Above



Notes for Moving Operation Caravan Spraying 60 MPH & Above Multilane Divided Roadways in Median and on Right Side w/ paved Shoulders less than 10' Wide

- (1) The following options may be used as the first advance warning the motorists see:
 - A. Truck mounted advance warning signs
 - B. Truck mounted changeable message sign (CMS)
 - C. Stationary changeable message sign (CMS)
(must use 'next 5 miles' and make circle to pick up signs)
- (2) Total distance between first and last vehicle in caravan should be approximately one (1) mile in length.
- (3) If using stationary CMS, the total distance between the CMS and application vehicle should not exceed 5 miles and the message should read 'machinery in road next 5 miles'.
- (4) Signs on vehicles should be mounted a minimum of one (1) foot from the ground and should not block the motorist's sight of the flashing arrow board and/or warning lights.
- (5) Sign W20 – 5L should be placed on back of protection vehicle and sign W20 – 5 LD on back of advanced warning vehicle in multilane divided traffic so vehicles approaching from rear are notified of operation.
- (6) Radio communication between vehicles is recommended.
- (7) Use warning lights with at least 50% being amber in color attached to the vehicles as high as possible and in a manner such that they are not obscured by equipment or supplies. Vehicle hazard signals or lights may be used to supplement this requirement. This requirement applies to all work vehicles and equipment not inside a lane closure or behind a barrier. This requirement does not apply to dump trucks, but is encouraged.
- (8) Use of truck mounted CMS's are optional with advanced warning vehicles.
- (9) Use a type "C" flashing arrow board.

Board Type	Min. Size
C	96"x48"
- (10) May use a type "B" flashing arrow board on 1st advance warning vehicle.

Board Type	Min. Size
B	60"x30"
- (11) If 43" x73" CMS is used, letter height must be 18".

